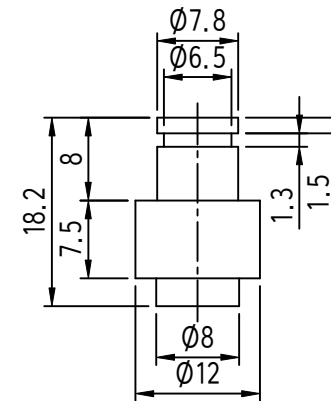




MARK	DATE	DETAIL OF REVISION	CHECK	APP.
△				
△				

Technical drawing of a shaft-hub assembly. The shaft has a diameter of $\varnothing 12$. The hub has an inner diameter of $\varnothing 7.8$. The dimensions are: 8 (distance from shaft end to hub start), 7.5 (hub length), and 2.6 (distance from hub end to shaft end).



1. 샘플송인드착한후양산할것.
2. 제품조립시작업자가상해를입지않도록날카로운부위를제거한다.
3. 표면처리: 흑착색도금
4. 기타자세한사항은설계자와협의한다.

DIVISION	GRADE	A LEVEL	B LEVEL	C LEVEL
1-4		± 0.05	± 0.10	± 0.25
4-6		± 0.07	± 0.20	± 0.35
16-63		± 0.10	± 0.30	± 0.50
63-250		± 0.18	± 0.55	± 0.90
250-500		± 0.30	± 0.90	± 1.50
500-1000		± 0.50	± 1.50	± 2.50

		2			1		
		1			1		
부 품 번 Part No.		번호 No.	명 칭 Part Name		갯수 Qt'y	재 질 Material	비 고 Remarks
DRAWN	CHECKED	CHECKED	APPROVED	SCALE :	MODEL :		
				2/			
				UNIT :	TITLE :		
				MM			
				SIZE :	MODEL No.		
				A3			
				DATE :	DWG No.		