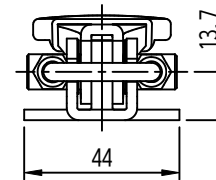
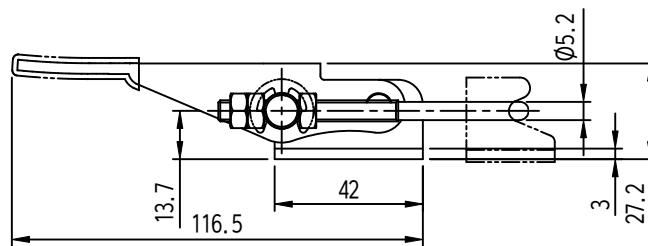
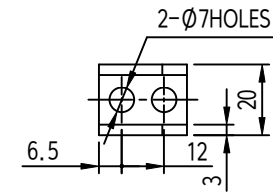
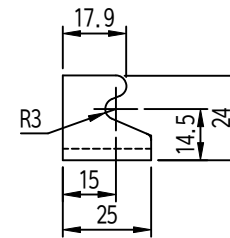
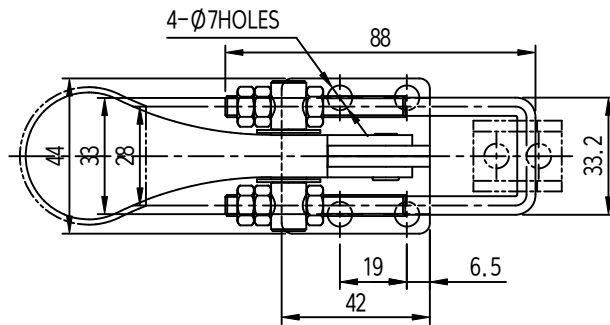


SLW032-41FA(S)



- 주요
1. 샘플송인독한후양산할것.
2. 제품초입시작업자가상해를입지않도록날카로운부위를제거한다.
3. 지시하지않은R은자면R로한다.
4. 기타자세한사항은설계자와협의한다.

GENERAL TOLERANCE			
SIZE	A LEVEL	B LEVEL	C LEVEL
1-4	±0.07	±0.10	±0.15
4-6	±0.07	±0.10	±0.15
16-63	±0.10	±0.15	±0.20
63-250	±0.15	±0.20	±0.25
250-500	±0.20	±0.25	±0.30
500-1000	±0.30	±0.35	±0.40

Part No.	Part Name	Q'ty	Material	Remarks
SLW032-41FA(S)				
DATE	DATE	DATE	DATE	DATE
DATE	DATE	DATE	DATE	DATE

SAMO